

**UPCERA**<sup>®</sup>  
Reliable Materials Expert



# Explore Hybrid

---

Born for full-arch restorations



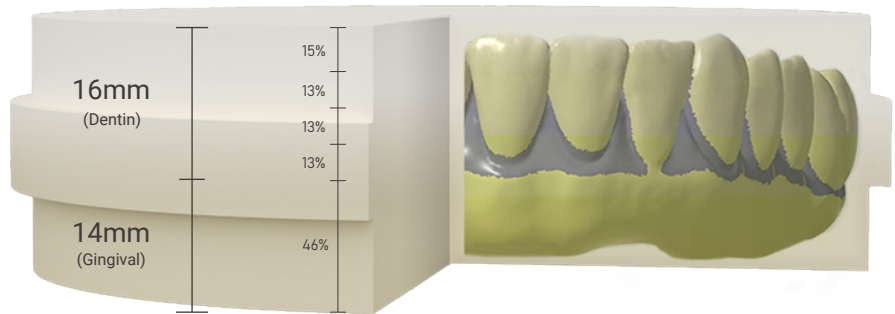
- The perfect match between aesthetics and functional provides simple and efficient restoration experience
- Suitable for full-arch restorations
- Simultaneous restorations of soft tissue and hard tissue
- Multilayer and gradient translucency creates life-like restorations

Translucency

**43%-46.6%**

Strength

**1027-1300Mpa**

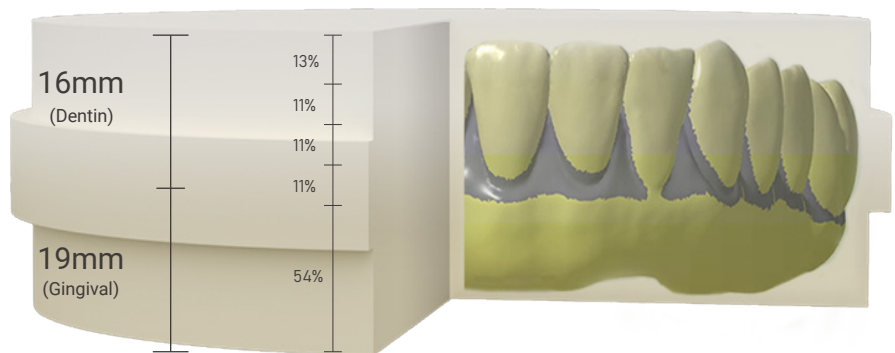


Translucency

**43%-46.6%**

Strength

**1027-1300Mpa**



## Shades



A1



A2



A3



B1

### Physical Characteristics

Density after sintering	≥6.0g/cm <sup>3</sup>
CTE(25-500°C)	(10.5±0.5)×10 <sup>-6</sup> K <sup>-1</sup>
Accelerated aging surface monoclinic phase content	<5%
Chemical solubility after sintering	<100μg/cm <sup>2</sup>
Radioactivity	<0.1Bq/g
Sintering temperature	1480°C

### Chemical Composition

ZrO <sub>2</sub> +HfO <sub>2</sub> +Y <sub>2</sub> O <sub>3</sub>	>96.5%
Y <sub>2</sub> O <sub>3</sub>	5.8%-9.7%
Al <sub>2</sub> O <sub>3</sub>	<0.5%
Fe <sub>2</sub> O <sub>3</sub>	<0.5%
Er <sub>2</sub> O <sub>3</sub>	<2.0%
Other oxides	<0.5%

### Sintering program

