

UPCERA



# FLNTScan R1

## Intraoral Scanner

---

Reliable Materials Expert

# FLNTScan R1

Intraoral Scanner

- Fashion and lighter handpiece
- Spontaneous heating and windless anti-fog  
Autoclavable 100 times per tip
- Calibration free
- Detachable and fixed cable



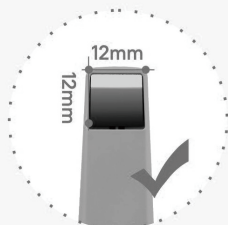
## 3D True Color

The latest image rendering technology has been upgraded, making the color reproduction more realistic, which is convenient for dentist-patient communication.

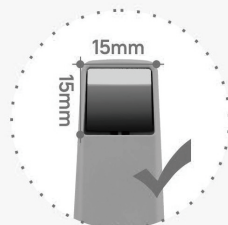


## AI Scan

The AI function built into the software, not only does it remove any soft tissue artefacts captured automatically but it completely ignores the tongue and cheeks.



Mini tip



Standard tip

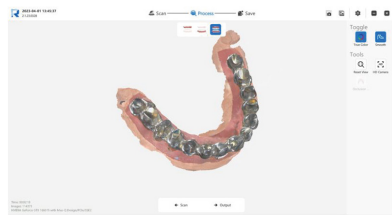


Open system



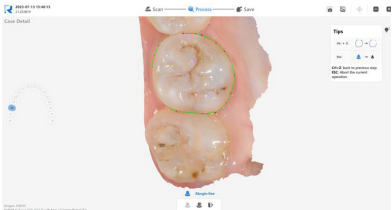
Multilingual system

## Unique Functions



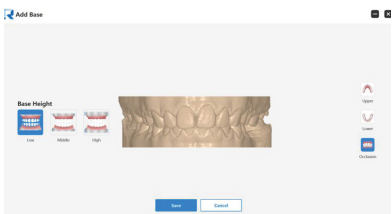
### Metal Scan

Key optimizations have been made for the difficulty of noises and reflecting during metal scanning. Optimized metalscan tools can help dentists scan all kinds of metal materials easier.



### Margin Line Drawing

The Margin Line tool can help dentists draw a margin line on the scan data and export it to a proprietary format. The marked margin line data can be imported to design software such as EXOCAD.



### Model Builder

The Add Base tool can help dentists generate model files that can be directly used for printing with one click.

## Specification

|                     |   |   |
|---------------------|---|---|
| Handpiece           | Dimension (L x W x H)   | 240mmX49.5mmX30.5mm   |
|                     | Weight  | 210g  |
| Tip                 | Standard tip size   | 79mmX19.7mmX15.8mm  |
|                     | Mini tip size   | 80mmX16mmX11mm  |
|                     | Scan area (Standard)  | 15mmX15mm   |
|                     | Scan area (Mini)  | 12mmX12mm   |
|                     | Depth of field  | 15mm  |
|                     | Autoclavable  | Up to 100 times Autoclavable 121°C 16mins<br>  Autoclavable 134°C 4mins |
| Accuracy            | Crown   | <10µm   |
|                     | Full arch   | <20µm   |
| Scan Speed          | Single arch   | 30s   |
|                     | Full arch with occlusion  | 90s   |
| Calibration         | Calibration free  |   |
| Output              | STL, OBJ, PLY   |   |
| Connectivity        | USB 3.0   |   |
| Multilingual System | Chinese, English, French, Spanish, Russian, Portuguese<br>Italian, Greek, Polish, Romanian, Japanese and Korean |   |