

UPCERA



- upceradentalamerica.com
- salesweb@upceradentalamerica.com
- 13100 Alondra Boulevard, Suite 105 Cerritos, California

Bridge the Aesthetics and
Functionality to Next Level



Versatile | Efficient | Natural Aesthetics

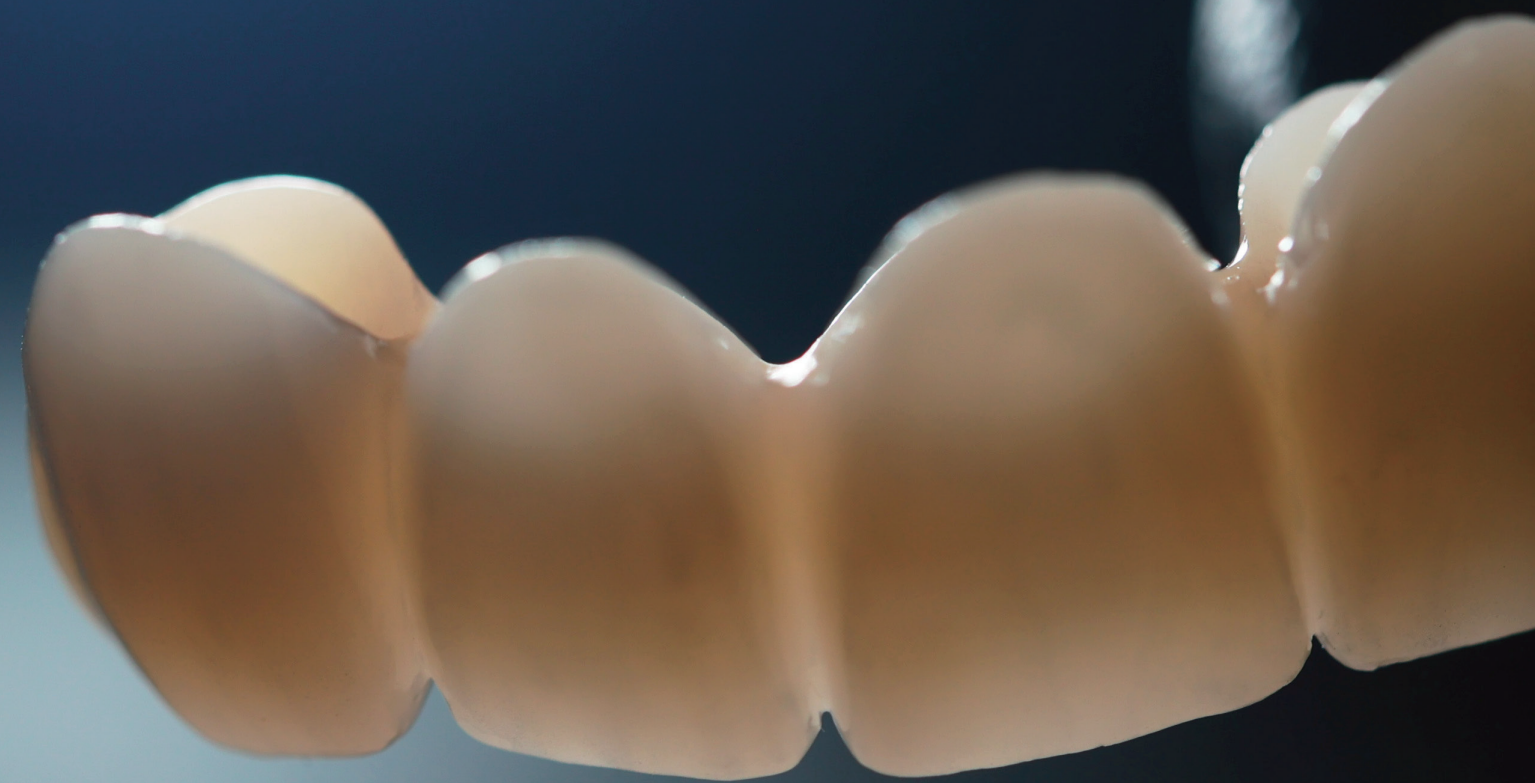
CE 0197
Date information prepared: 2025-01/ Rev.0

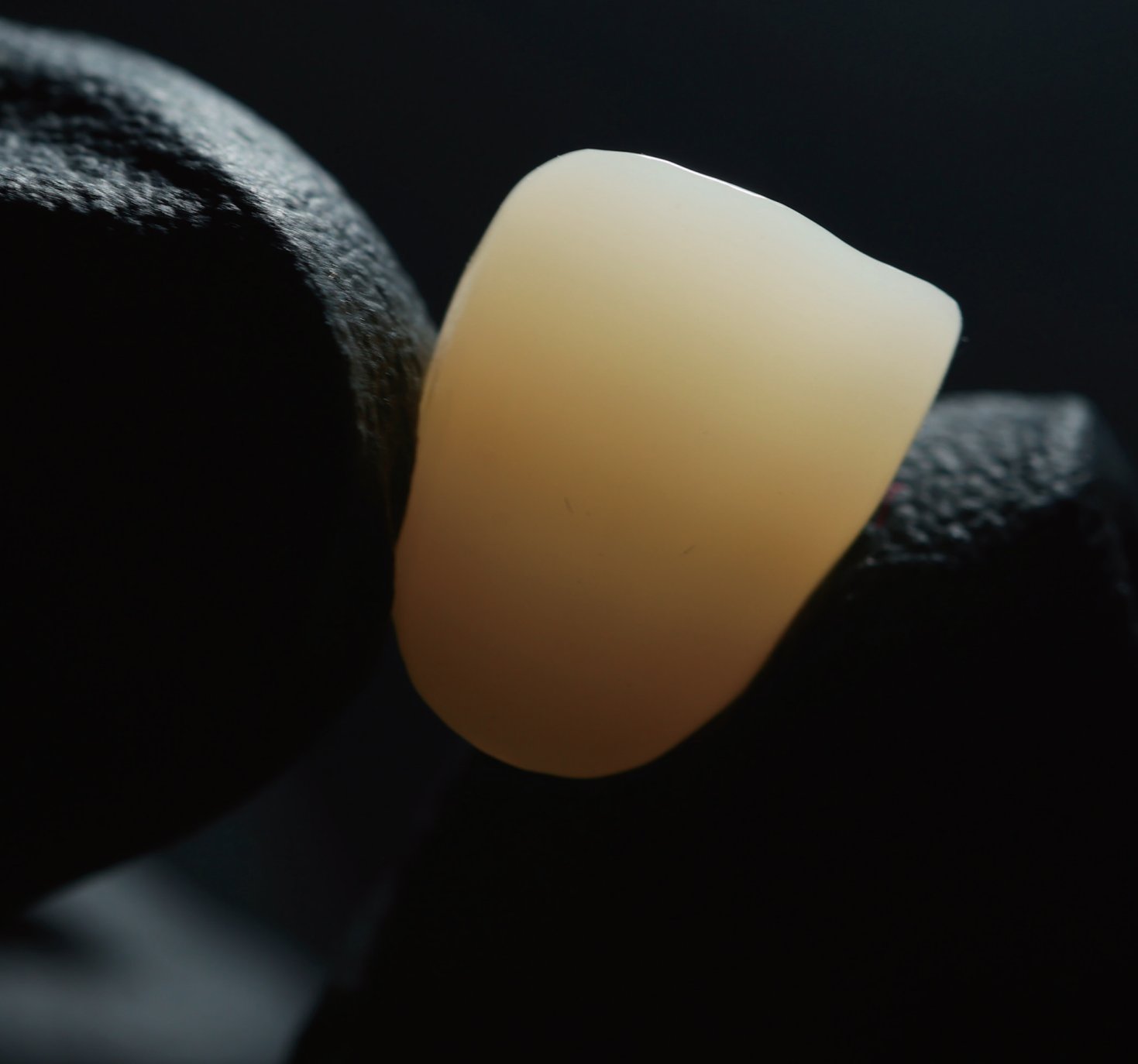
Mastering Monolithic Style

DUO embodies a holistic approach to dental restorative materials, seamlessly integrating strength, aesthetics, efficiency, and versatility. Its foundational principles resonate with the product's name, "DUO," symbolizing a steadfast commitment to excellence in contemporary restorative dentistry.

With an impressive flexural strength of 850 MPa to 1200 MPa and translucency ranging from 45%-48%, DUO exemplifies the ideal fusion of durability and visual appeal. This allows dental professionals to create exquisite restorations that meet the highest standards of functionality and beauty, ensuring exceptional outcomes for patients.

Balance of Strength and Aesthetics

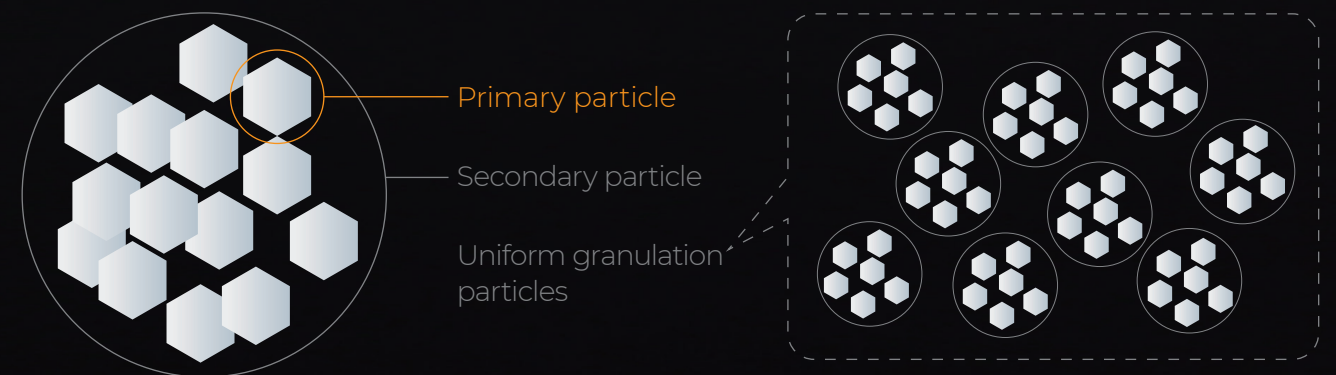




UPD Technology Lays the Foundation of High Quality

SINOCERA Uniform Particle Dispersion (UPD) Technology is the key to the uniform dispersion of powders and controlled defects. The state-of-the-art zirconia powder produced by this technology innovatively collaborates with UPCERA's advanced blank manufacturing processes, contributing to the high-quality DUO.

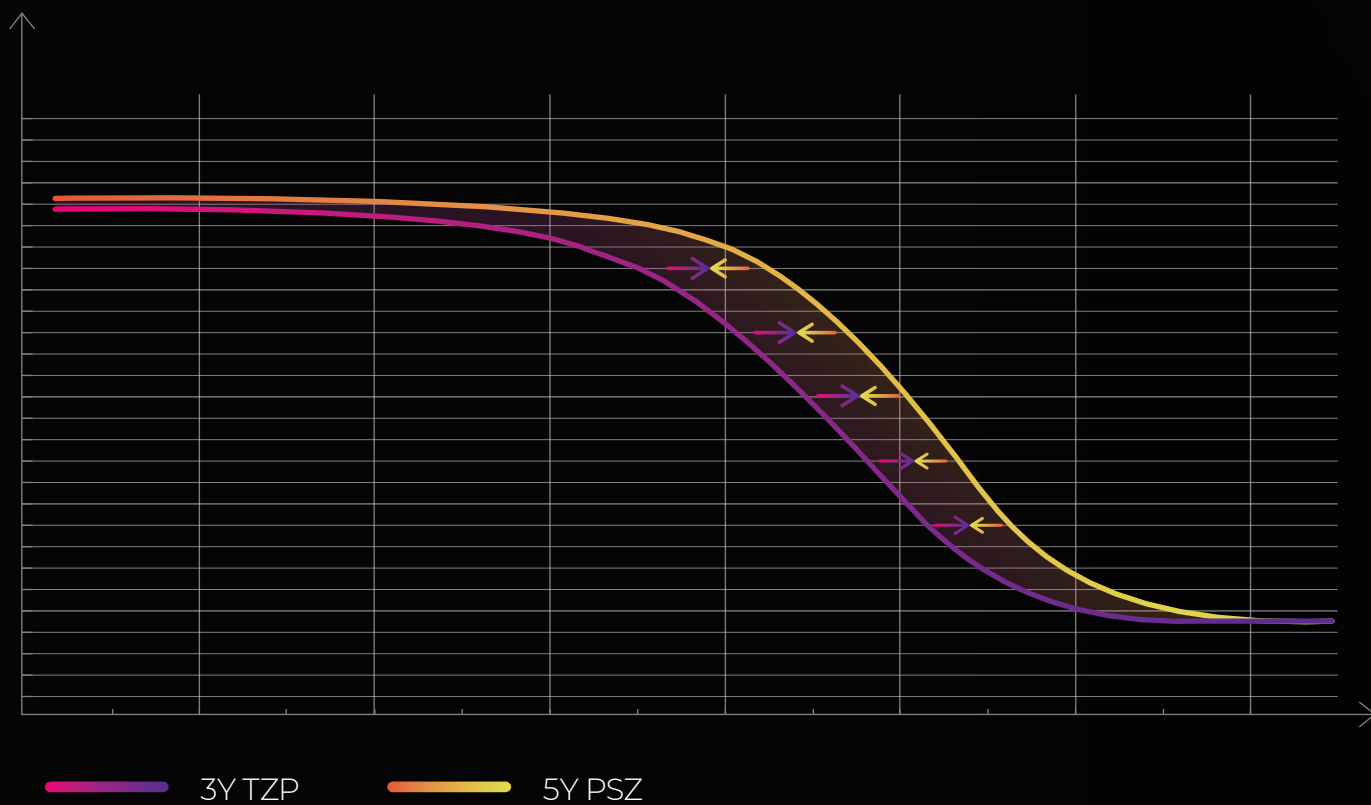
Excellent Consistency and Stability





Reduced Deformation and Enhanced Fitting Accuracy

The new powder technology adjusts the sintering activity of 3Y and 5Y particles, ensuring consistent sintering results and reducing deformation.



Versatility in Application and Adaptability



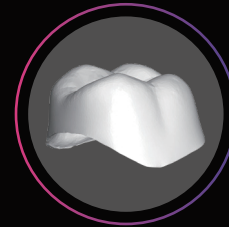
Onlay/Inlay



Veneer



Crown



Substructure Crown



3-unit Monolithic Bridge



3-unit Substructures



Multi-unit Monolithic Bridge(≥4-unit)



Substructures Multi-unit Bridge(≥4-unit)

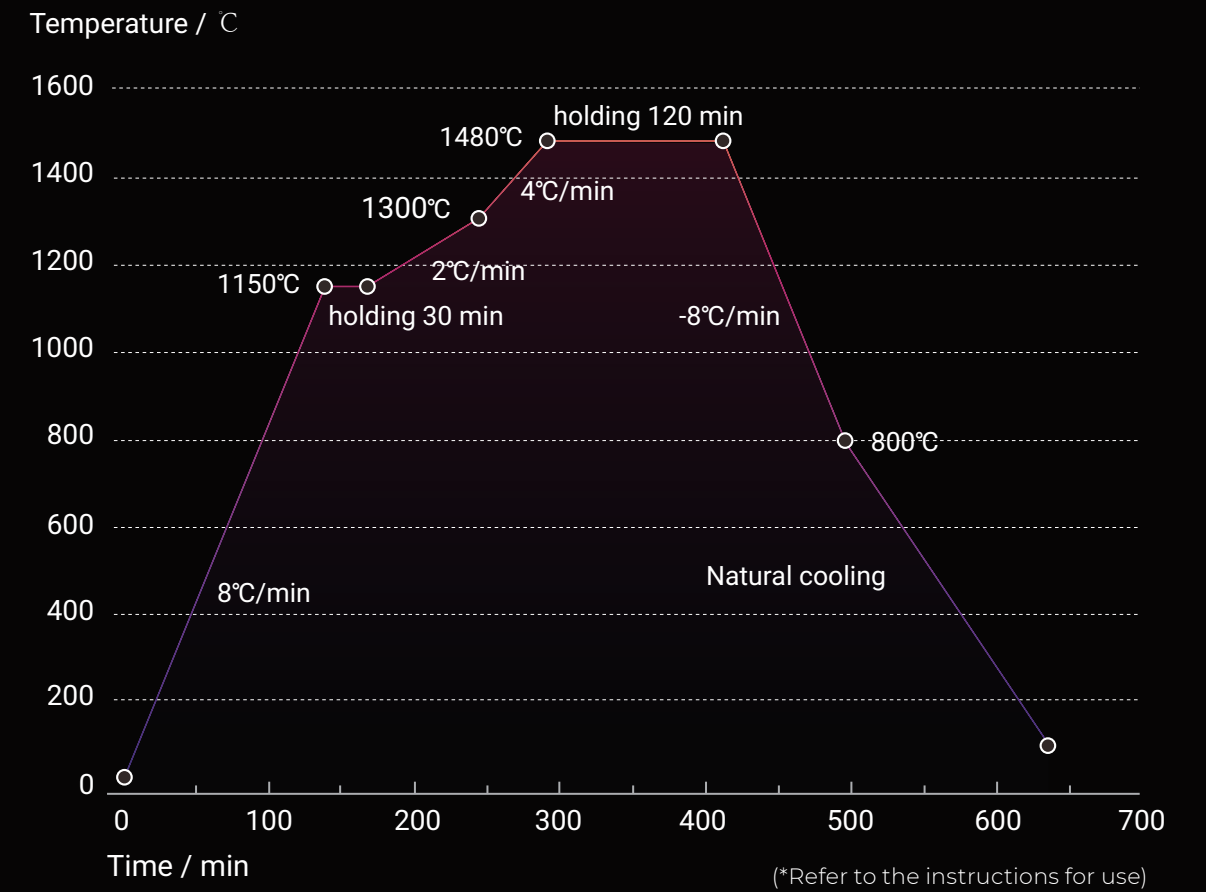


Implant-supported Single Unit



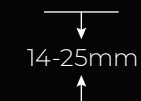
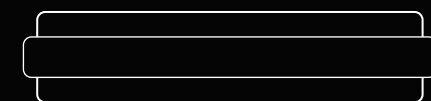
Implant-supported Multi-unit/Fixed Complete Dental Prosthesis

Sintering Curve



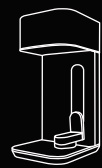
*Sintering temperatures are recommendations. If necessary, carry out a trial sintering cycle and adapt the sintering temperatures or times as needed.

Product Specifications



D98X14 D98X16 D98X18
D98X20 D98X22 D98X25

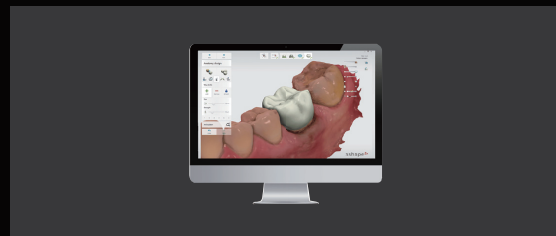
Enhanced Workflow Efficiency



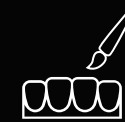
Scanning



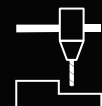
Sintering



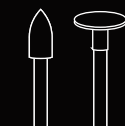
Designing



Micro-layering



Milling



Finishing