

UPCERA

Aevra

Engineered for Aesthetics
Perfected from Powder to Prosthesis






UPCERA Dental America Inc.

13100 Alondra, Unit 105
Cerritos, CA 90703, United States

(888) 342-3549
salesweb@upceradentalamerica.com
upceradentalamerica.com

Follow us on:

-  Upcera Dental America
-  Upcera America
-  upceradentalinc



Facebook



Instagram



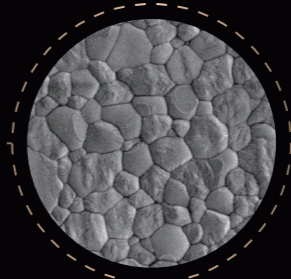
Youtube

CE 0197
Copyright © Upcera No.2026_US Rev.01

Reliable Materials Expert

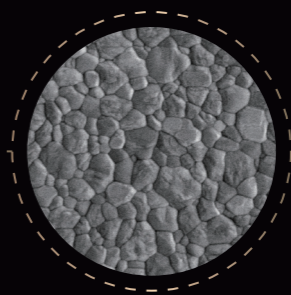
Redefining Zirconia Functionality & Aesthetics with Sinocera & Upcera Technology.

With the innovative dual-core powder engineering system, Aevra represents a new generation of high-end aesthetic gradient zirconia. The new powder technologies ensure excellent translucency (46%-50%) high strength (800-1050 MPa), and precise shades.



5Y-PSZ

800 MPa
50% Translucency



4Y-PSZ

1050 MPa
46% Translucency

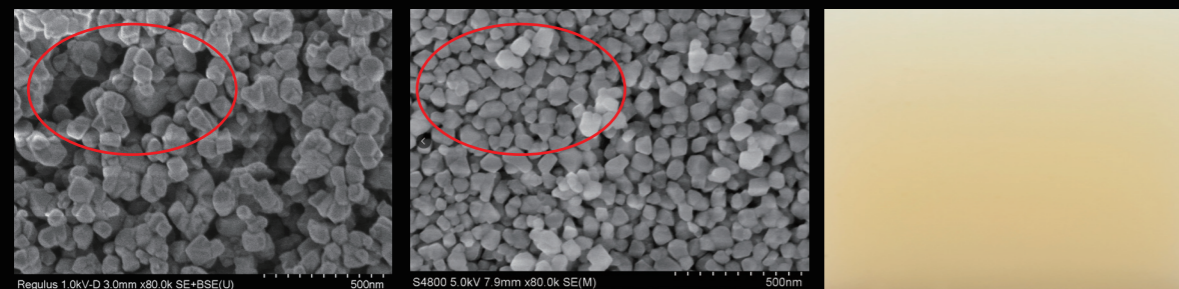
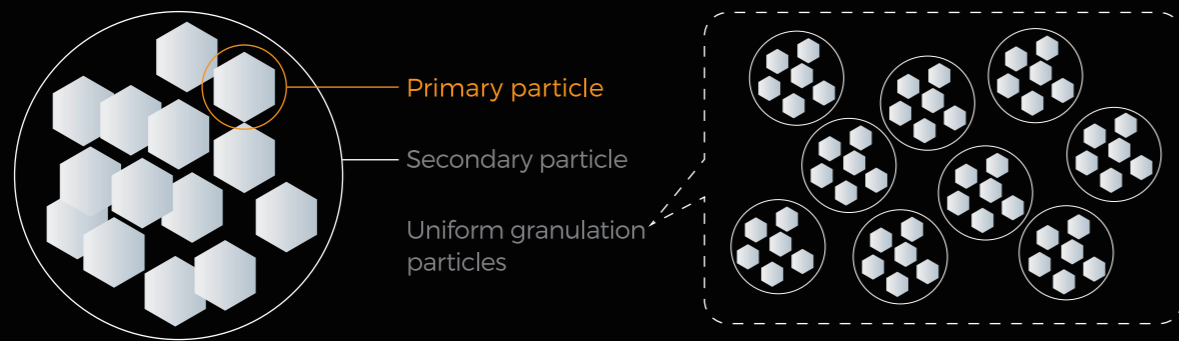
UPD & CSG Technology

A dual-core powder engineering system ensures homogeneous particle distribution and controlled granule morphology, leading to next-generation zirconia with unmatched optical and mechanical consistency.



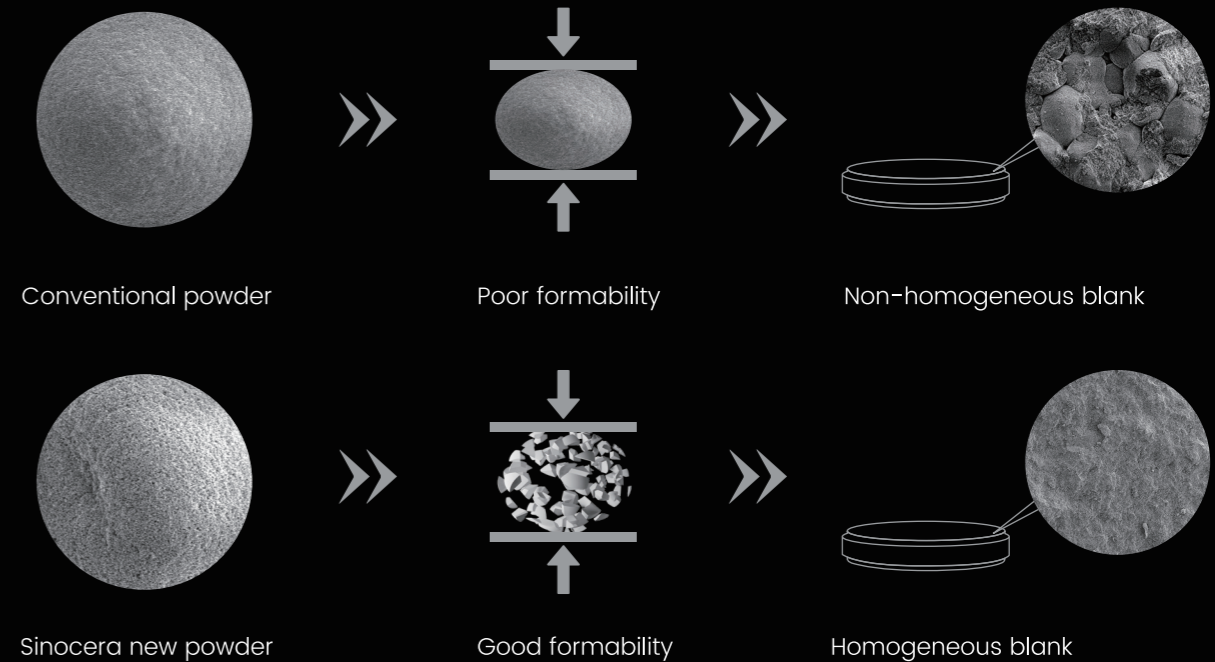
UPD (Uniform Particle Dispersion) Technology

UPD Technology results in high-purity zirconia with controlled defects, contributing to improved strength and translucency.



CSG (Centrifugal Spray Granulation) Technology

CSG technology, combining with UPD technology, enables the powder to have better porosity and sphericity, thereby contributing to homogeneous density.





Monolithic
Made Easy

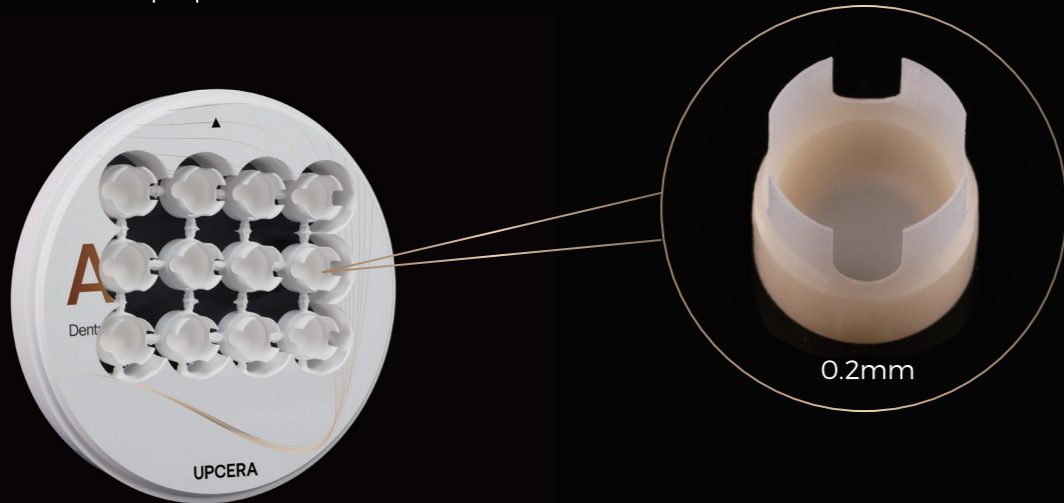
By Angelo Gallochio

Freely Shape Aesthetics and Function



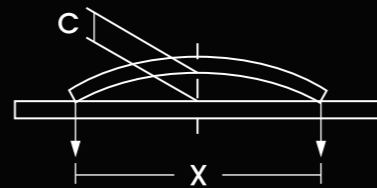
Perfect Margins, Extended Longevity

Good marginal machinability ensures precise adaptation between the restoration and the prepared tooth.

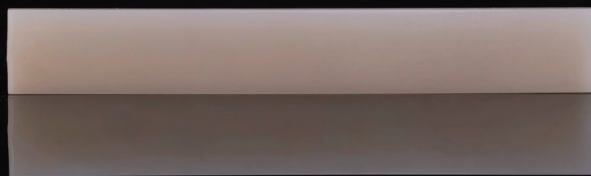


Consistent Sintering Performance

After sintering, Aevra undergoes reduced deformation, demonstrating the excellent sintering consistency.



ISO 18675-2022



Aevra



Product A



Versatility In Application



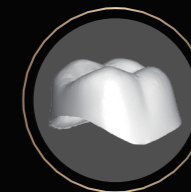
Onlay/Inlay



Veneer



Crown



Substructure Crown



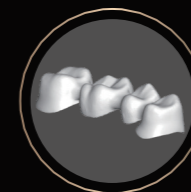
3-unit Monolithic Bridge



3-unit Substructures



Multi-unit Monolithic Bridge(≥4-unit)



Substructures Multi-unit Bridge(≥4-unit)

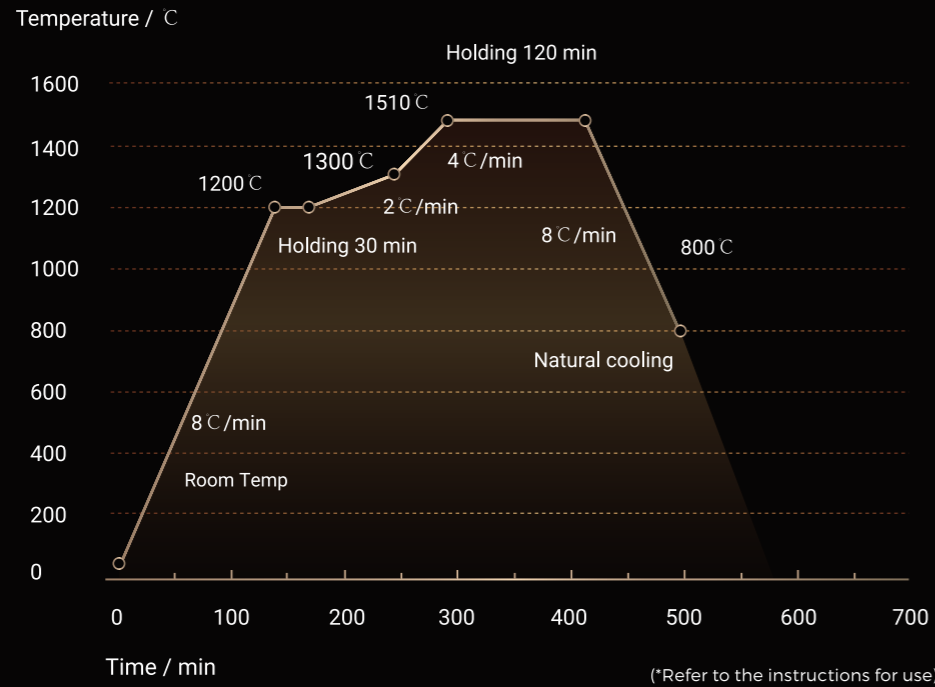


Implant-supported Single Unit



Implant-supported Multi-unit/Fixed Complete Dental Prosthesis

Standard Sintering Program

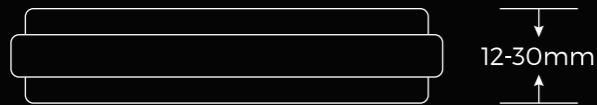


*Sintering temperatures are recommendations. If necessary, carry out a trial sintering cycle and adapt the sintering temperatures or times as needed.

Enhanced Workflow Efficiency



Product Specifications



D98X12 D98X14 D98X16 D98X18 D98X20 D98X22 D98X25 D98X30

- A1 A2 A3 A3.5 A4
- B1 B2 B3 B4
- C1 C2 C3 C4
- D2 D3 D4
- BL1 BL2 BL3 BL4